



MEKHI
sickle cell warrior

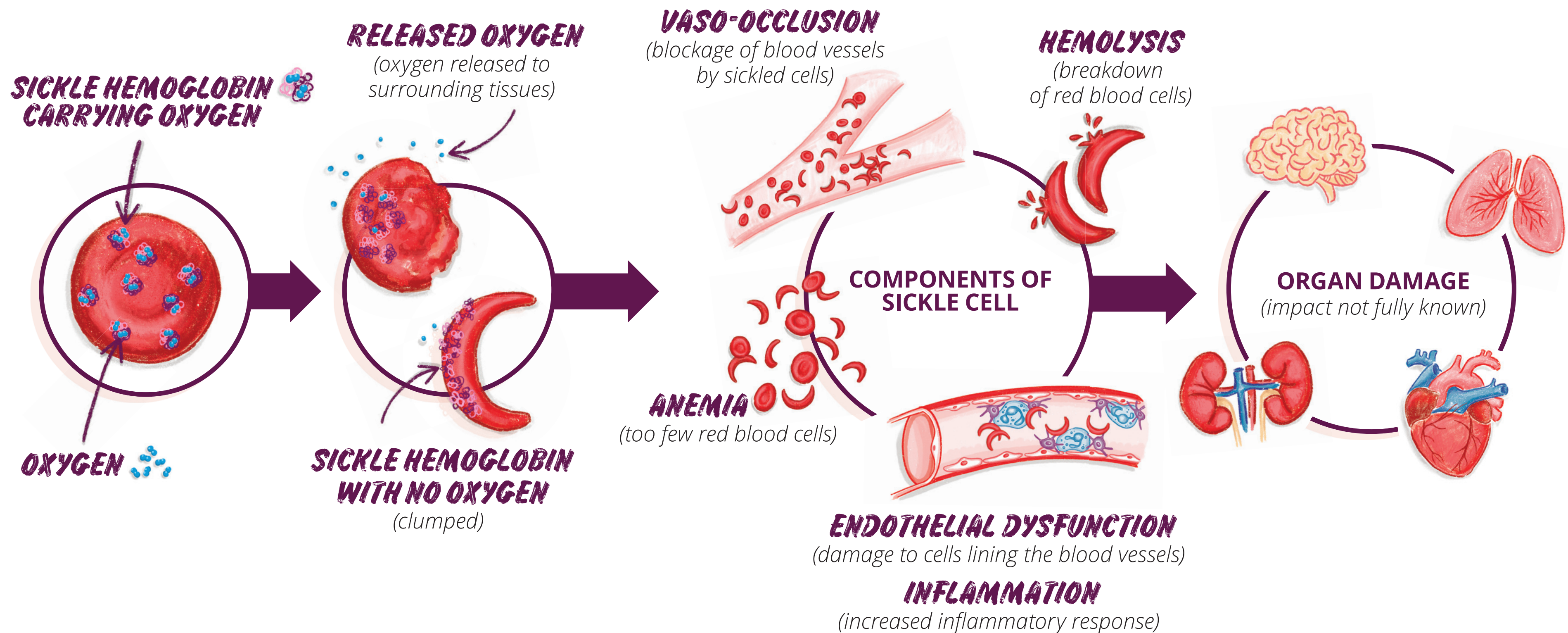
PAIN CAN BE LOUD. DAMAGE CAN BE SILENT.

sicklecellspeaks.com

SICKLE CELL DISEASE CHANGES OVER TIME, IMPACTING YOUR OVERALL HEALTH

THE RED BLOOD CELL SICKLING PROCESS

When red blood cells sickle, they can't do their job of carrying oxygen to tissues, organs and bones.



Learn more about sickle cell and how it affects the body!

These components may lead to organ damage to parts of the body like the brain, lungs, heart and kidneys. It is not known, how much each of these components of sickle cell may impact your overall health.